

Indian Botanic Garden Library
BOTANICAL SURVEY OF INDIA

CLASS NO.....

BOOK NO. *STI-C*.....

ACC. NO. *B-10,126*.....

m d'histoire naturelle

curse

#

Amnougat & Mellor



HORT. BOT. REG.

SCALCVTT. 1909

STIRPES CRYPTOGRAMÆ

YOGESO-RIENANÆ;

QUAS

IN RHENI SUPERIORIS INFERIORISQUE, NECNON

VOGESORUM PRÆFECTURIS

COLLEGERUNT

J. B. MOUGEOT Bruyeriensis Med. Doer et C. NESTLER Argentinensis
Facult. Med. Argent, Botan, Prof.

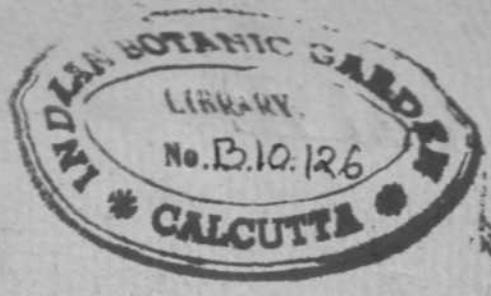
—DEUS O. M, et natura nihil frustra creaverit.
Posteros tamen tot in vent tiros fore tililitales ex muscis
auguror, quot ex reliquis vegetabilibus. —

Linn. *Cut hono? Ameen. Acad* torn. III, p. 2{i.*

FASCICULUS VIII.



BRUYERII Vogesorum. 1823.



[Faint, illegible text, likely bleed-through from the reverse side of the page]

[Faint, illegible text at the bottom of the page]

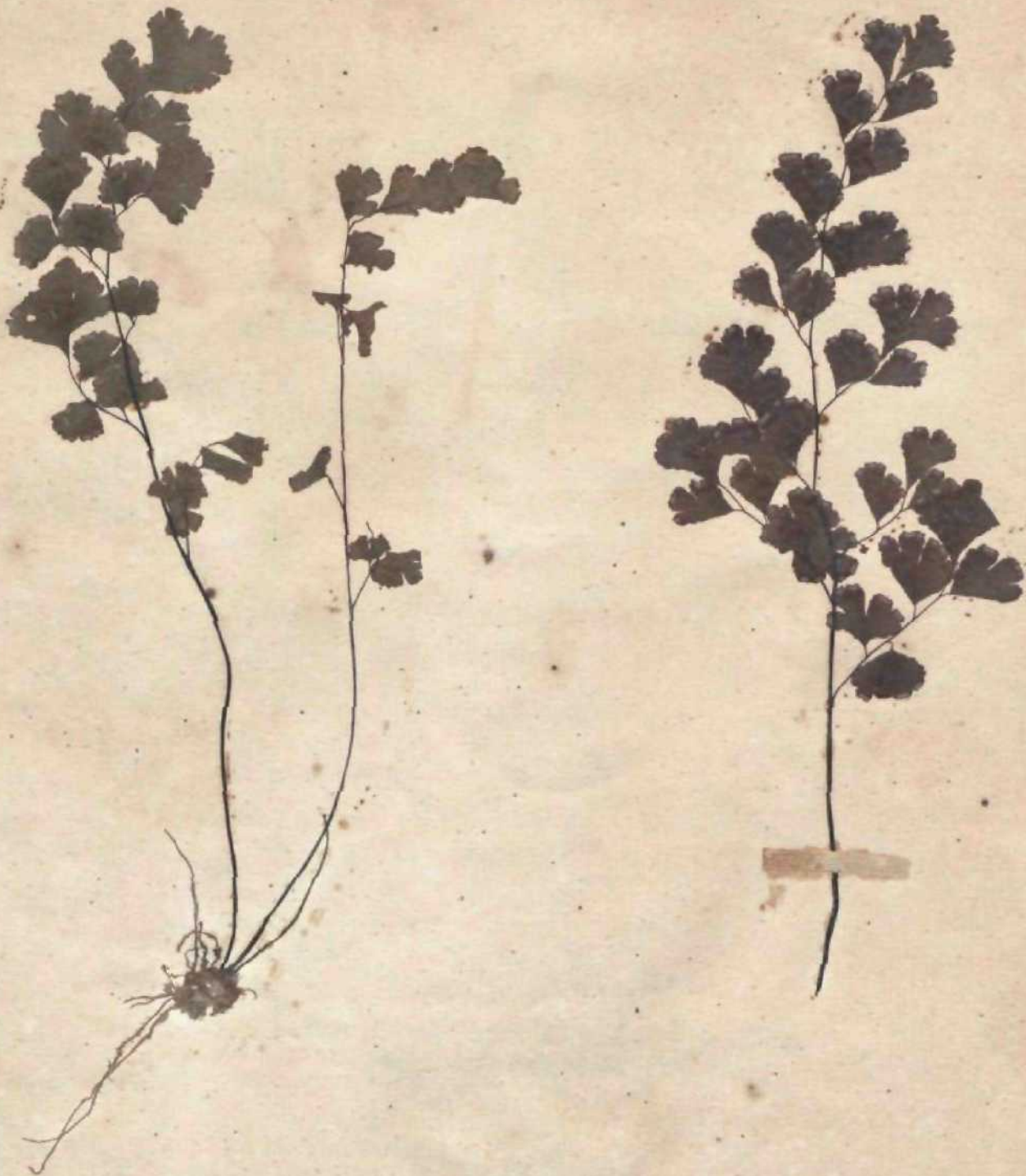
INDEX SISTENS SPECIERUM NOMINA FAScftxiLi VIII'.

Adiantium CapiUus venerb Linn.	N.º 702.	Nfdularia Cmcibulum fty&	N.º 776.
Alecioria criualis Achar.	755.	Nosioc pusillum Bory*	*
Aspidium crisalattm Swartx*	701.	JVosioc verrucosum rauch,	79*
Barbula coovoluia Hedw*	716.	Onjgena equiua PeP«.	775.
Barbula fallax Hedw.	715.	Orlhotricbum cupulalum Jloffin.	723.
Bryum pallens Swart s.	729.	Orilioirichum speciosum i'eei.	722.
Brynm paUescens Schleicfu	728.	Oacillaria nigrescens Borj*	792.
Bnxbauumia vtricis Ifritt	724.	Palmelh hyttiom Lytigb.	800.
Catharinea heirjnica Ehrlu	725.	Jiiiijrlri afeuriles Achar.	70-
Ceuomyce bacillaris Achar.	750.	ParmeNa Clemct*liana Achar,	737.
Ceuomjce cervicoruis A char.	749.	Parmelijom shalodes v Janniformis Ach	73-
Ceuomjce cocrifera Achar.	752.	Icyiza Attrupariffi Pers»	789.
Ceuoniyre ddcata Achar.	753.	Peziza aurtlf;i Pers,	787-
Ceuomyce dignis el v, f. Acuar*	751.	Pcii/a c;irpiiieo I'ers.	787-
Ceuomyce rangiformis Flærke.	754.	Veiiia cimna Pers.	785-
Chætophora elegans Agardh.	797.	Peiiza herbarum Pers.	785-
Cornicobrw. culeata v. muricella Flærk	756.	Peziza nervisequa Pers.	785.
Daltor and Tayl.	732.	Pi»-« iimbilicuta I'ers.	785.
Biciwum ovale Heaw.	720.	Phascam hryo'ides Dicks.	7nj,
Dicranum Schreberianum Hedw.	719.	Phascum crispum Hedw,	7nj,
Dicranmn varium «. vnde Hook.	718.	Phascijm palOM ffdw.	7nj,
Funaria Miiliffibwgii ^ ^	726.	Pleuridiain altemifoliura Bnd^	707.
Gaillardolella nataus Bory.	796.	PteroHfini'jm heteroptermn Brid.	74-
GeOklo, silm glminos. b. lubricum Pers.	780.	pvT-cnula looccephah Achar.	75-
Grimmia rerurvaia Sedw*	713.	Racodiom celUrr Pers.	790*
Gymraomn m minutulum Schleich.	709.	Rbizomorpha suhcorticatis Pers.	75f>
Gymnostomum fmlvmatum Hoffm.	710.	Sphseri* arinosa Fines.	7%
Gymnosiomuiii iphaTiriin. Schwagr.	708.	Spherla capitals Pers.	76:1.
G Wiosomu trichode. Web. fil.	711.	Sphoeria cofæDTæB Pers.	764.
Gyroiijhora m>it>a Achar.	736.	Sph*r« cupularis /Nr.T.	71-
tlél uii ura aureum Pers.	782.	Sphaeria (bratnitiosa Pers*	71 i-
Hydnnm auriscalpium Pers.	777.	Sphæ " inosa Pers.	770.
Uypnum — hersonhyllum Brid.	731.	Sphi a oxpioma Pers.	76*7.
Iiypnum roolle Dicks.	730.	Sphseria Pinsstri ?<' CTnd.	775.
Hy6terium dcgenerans Fries.	762.	Sphaeria Peiicilfus ^efs.	7<J3,
Jmi^rmannia obwsiMm //OO*.	733.	S h f a pulverarra Pers*	773.
Jmi^rmannia veniricosa PtCfiS.	734.	Sphaeria Llmi Schlet'ch-	766.
Lecarora candelarJa ei var. Ijr'cbnea Ach.	743.	St> lia?ria v>esiaca Pers.	765.
Lecanora citrioa Jchnr*	742.	Spibma microdonum Achar.	7S8.
Leranora nibfiwa el ««•• argentata Ach.	740.	Thelephora pergBmenfa /'rw.	77a
L*>fanors vhtclina Achar,	741.	Thelephow Sambuci Pers.	77P-
Lecidea Ehrhartiana -tt. pnlytropa Ach.	748.	Thorea ramosissima Bnrf.	77P-
Lecidea elworhtoma Achar.	746.	Ti'ichostomnm alnitt^s Aot/i,	795<
L.ri<lt-a para^ema Ackar.	745.	Ulva iiLleilin^ns Linn*	757-
Lecidea pclairaja Achar.	744.	Voilta vo^esiaca llornsch,	7(f).f.
LecJdca uliginosa Achar.	747.	Welssia Stark^ana Ild\\	7(5o.
Leda capucina Sory.	793.	Xyloma Spiracie Kitnze.	76 r.
Leotia Clavua PerJ.	781.	Xylomn umliilicalnm /'err.	76 r.
Marchaotia bemispha?rica Unrt*	735.	Zygnema dubium Kory.	794-
Meesia uliginosa Hedv?*	727.	2,ygodon conoideum //«£»*.	721.





7⁰¹ - *Aspidium cristatum* Swartz. *Sjn. FiJic. p- 5a.*
Polypodium cristatum Una, *VcAypal'mm tallipteri*) Ehrh*
Inter "pliagna in paludibui circa Ilag<ncnm. Auguilo. ,



702- *Adiantum Capiveneris* Linn*
In spectuncis Jurasii. ;liitate.

703. Phascum crispum Hedw. Stirp. Crypt. 1. tab. 9.
Ad terram in agris. Vere.

704. *Phascum patens* Hedw* *Stirp. crypt** I. tab. 10.

In pralis humidis prope Bipootem, unde acuiiss. Muscol. *Bruck* misit. **Autumno.**



7◇5. *Phascum brjfoides* Dicks. *Crypt. Fasc.* 4. *tab.* 10. / . 3.
In solo lutoso promiscuc cum *Grimntia luiiceolata*. Vere.

706. *Voilia vogesiaca florsch. in Lilt.*

*Phascum vogciiacum Moug. et Nestl M.S.S. Plja*cura ca^spiiittum Brid. in Lilt.*

Ad terrain stereo re vacciuo imhibiLam in ri ton I is *Uokneck* prscriptis
nive \Qia lbrc amm r^plclfs. Aul u lll no,

Phascum vogesiaca Schwäg. in hled. An ty)u4. suppl. 2. tab. 127. fig. 1-8.

707. *Phaeocephala rubripes* — *BritL MetL Muse. p. 10.*

Phaeocephala rubripes W i n Dicks.

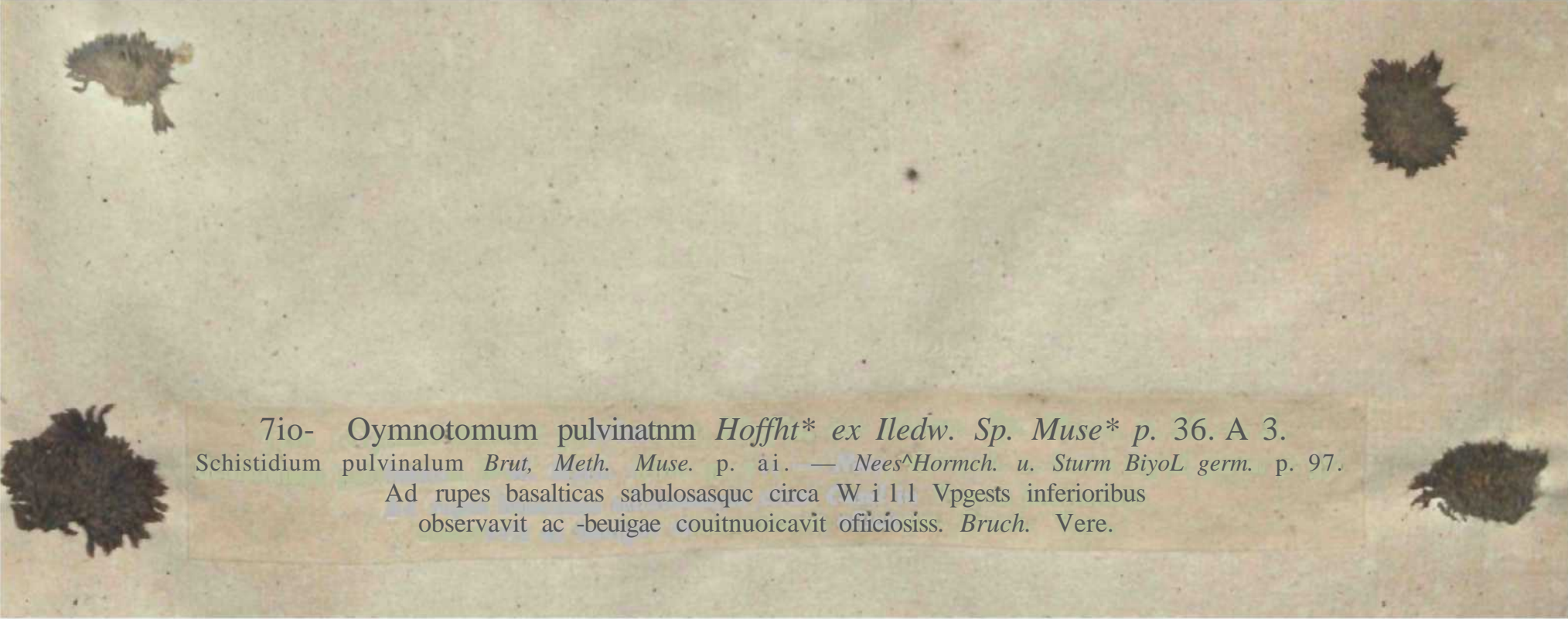
In 3;ri* calliba*go< aridis. Vere.



708. *Gymnostomum spfericam* Schwg. in *Jledw. Sp. Muse. Suppl. I. p. ,, t. 8.*
In (Olo lutoso ciica LuD^villam Bipontemque. Autumoo.

709. *Gymnostomum minutulum* Schleich. ex Jledw. *Sp, Muse. Suppl u p* a5. t. 9.*

Ad terrain **areosam** circa **Argentoralum nW** primus legit inter nos scdulus Boiauophilus *KneiJ*
P
Pliarmac. Aigcut. Scro autumnino.



710- *Oymnotomum pulvinatum* Hoffht* ex Hedw. *Sp. Muse** p. 36. A 3.
Schistidium pulvinatum *Brut, Meth. Muse.* p. ai. — *Nees & Hormch. u. Sturm Biol. germ.* p. 97.
Ad rupes basalticas sabulosasque circa Will Vpge's inferioribus
observavit ac -beugae couitnuoicavit officiosiss. *Bruch. Vere.*



711. *Gymnostomum trichodes* *Treb. fit. enc TFcb. et Mohr Crypt, germ.* 85.

Ana-ctangium trichodes Schwcegr. Wetasia trichodes Hoof,;

In grnitt: *Jrrorato procruporum monlts Hokneck. Aulnmno.*

*n/z** Weissia Staikeana *Iledw** Stirp, Crypt, 3. tab, 34* B.

Bryum roitiutum *Dicks.*

In arvis ad terrain lutosam. Vrrc.

713. Grimmia recurvala (Fetliw) Stirp* Crypt, i. tab. 38.

Bryum curvifolium Dicks. "Grimmia recurva" Hook.

Ad lapides calcarias prope Bifontium Maio.




714. *Pterogonium lietropterum* Brid. in Lift* (sub *PterygynancJro**)

A*1 rupes silkeas in &yly» circa *Bruyerhtm**

Species sat a Pterogonio £Jiforini disiincu ul idliiniat ccl. a *BrLUt*,

Pterogonium filiforme ex Schwäb. in Medw. 1 p. 111. Tab. 210.



715- *Barbula fallax* Hedw. *Stirp. Crypt** I. tab. 3 4.

Bryum imberbe Linn *Y* *Tortula fallax* Swartz_{ti}

In muris , arvis aggeribusque. Prinio vere.



m




7161 *Barbula convohna* & *edw. Sp* Muse, p- ra*^o.

llrjum convolntum Dicks, Tortul emivolaia Swartz.*

Ad murcw, sasa_t ct in arvls. MarLfo.

13ujLulii convoluti Collect, *nastix* Fasc. 111. n.^o 218 ad *Barb. revolaia*in ZmW. referri dcl«t.





717. *Trichostomum aloides* Koch in Litt.
In Vogesis inferioribus ad rupes siliceas collegerunt doctiss. Koch et Bruch. Autumno.



718. *Dicranum varium* a, viride *Hook, and Takh Muscol brit** p. 58. tab. 17.

Bryum callitricium *Dicks.* *Dicranum varium* *Hedw.*

In arboribus circa Argrutoraluni. Ailmrino ac Hyeme.

Dicranum nrtm Fi&* V. n." ^t^, ail variet. b. ruiscenlm *fnofi.* h c. pertinet,
sed ambo fluiti ut v. irictjlti sunt liutum codji eranca.

719. *Dicranum Schreberianum* Hedw. Sp. Musc. p. 144, tab. 33.
Bryum crispum Schreb.
In terra limosa. Vere.

720>. Dirranm n»»te Hedw. Stirp. Crypt. 3. tab, 3f.
Campylopus oviiu Brid, Mrih. !/«.», Dijpuddn ovatut ertf. i« Lit.
Ad tiu grtoiloH, rm *c auu,



1



*m**



lf<



721t.

Zygodoo ronoideim Hook, and TafU MuscoL Irit. p. yU tab. ar.

Amphidium pulvinatum Nees. *Gagea compacta* Raddi.

Ad

arborum trancos annosiores praesertim Ulmos in sylvis humidis circa *Argentanam* vere dtp. " " " j ^fessus Bot. *Kneiff*, at primus in Gallia hanc rarissimam speciem amicus noster D^r. *Guepin* prope *Andegavum*.



^23. Oriholrichmo Jpcionini J\V« in *Sturm Ft. germ. Fa\$.c. 17;*
Ad uborum tniuco* cunt Ortbol. strinlo , affini «tc. \en.



723. *Orthotrichum copula torn* Joffm, *Fl. germ. a. p. 26.*

BpU^Q strictum g. Linn,

Ad rapes in Vog^{is} iufioribus. Vere.



724. Buxbaumia viridis *firtl*, in *Litt.*

Buxbaumia aphylla b. *viridw* De Cand. *Suppl.* p. 227.

Sopn terram **trancoiqae** piri. Jos in **tylris** circa Rruvermm. Waic.

Jion sotum pro specie propria sed idon'anj nJ novum genus couJenduui eel. ti P 'I < l V
ra. l. no. 15 declaravit.



925. Calhannw ttrrynica *EUrlu Beitr, t. p. 190.*
Foltrriihuro li-rCTftictiDi *Tfettv. OljgoiricTiam hrrcynicmn Dn Cant?*
Ad lcnwtt in prcrupu JberfiidJ logesarmn. &tlat«,



726. *Funaria Muhlenbergii* Hedw. Sp. Musc. Suppl. 2. p. 78. t. 66.
Ad rupes calcarias. Verc.



727. *Meesia uliginosa* Bedw, *Stirp. Crypt.* !• tab. 3.

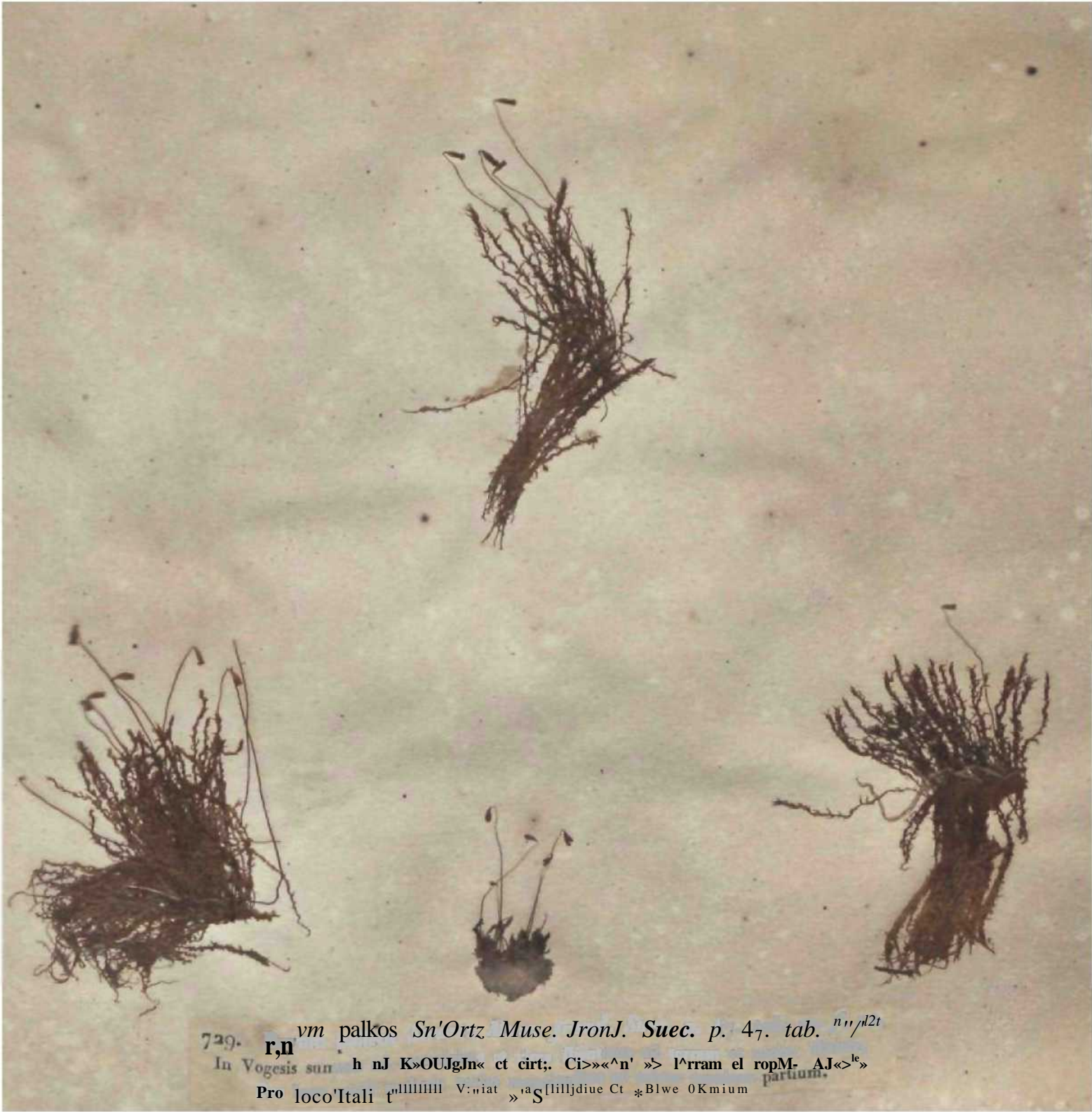
Bryum tritellus f. inn.

In madidts cautibm' iliris prope f Mb Turn Utche. ob**-<pio>. oitur.
icrutator Ifollmdre raileusi* i bservavit. Estate.



728. *Brjuno paltaceus* Sch hick, ex *Jlrdw. Sp. Muse. Suppl. a. p. t 07. t. 75.* *
Ad ruj*es circa *Bipantem. Vere.*





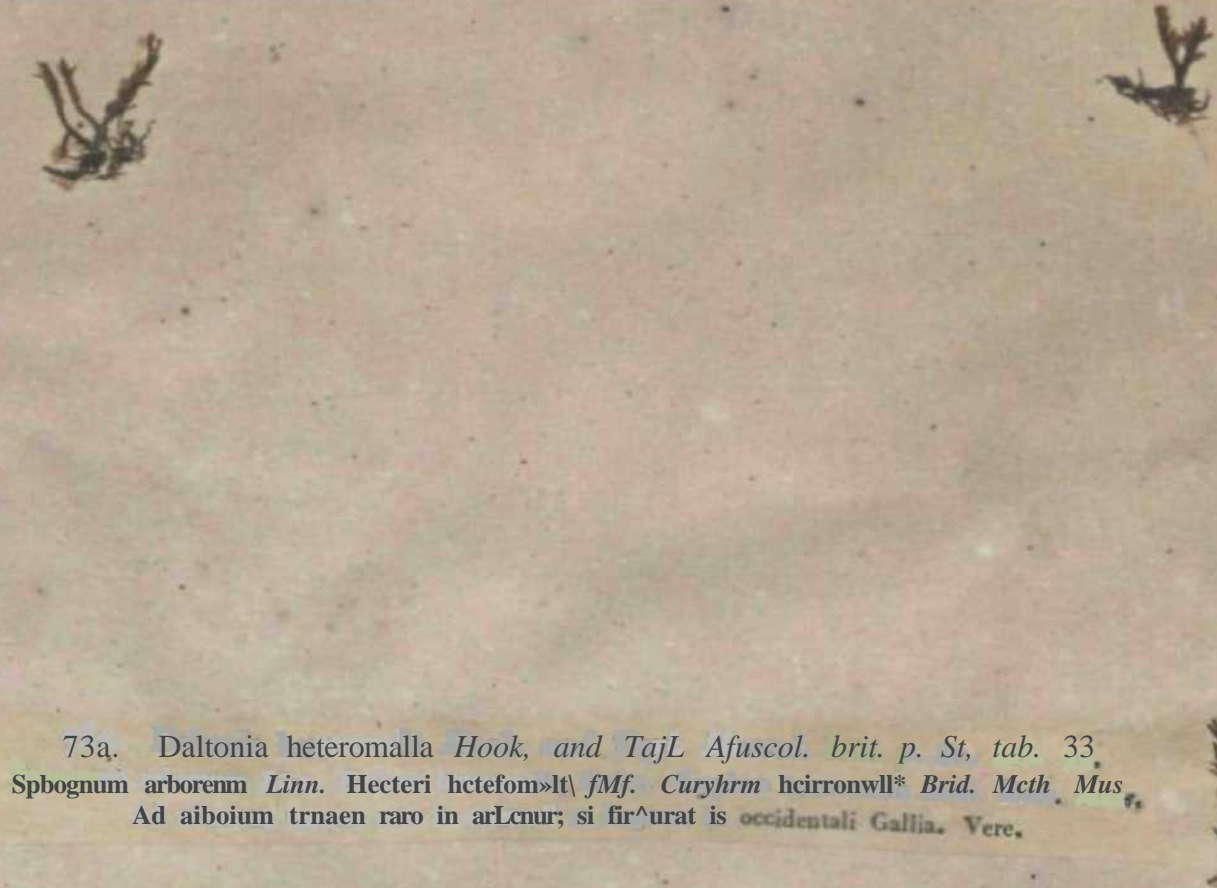
729. *r,n* *vm palkos Sn'Ortz Muse. IronJ. Suec. p. 47. tab. n^o/n^o2t*
In Vogesis sun h nJ K>OUJgIn« ct cirt; Ci>»«^n' »> l^rram el ropM- AJ<>^k»
Pro loco'Itali t^{nlllllllll} V:niat »aS[lilljdiue Ct *Blwe OKmium *partium.*



730. *Hypnum molle* Dicks- *Crypt. Fasc. a. tab. 5./.* 8.

In rupibus monticulis ad ripas rivulorum. Æstate.

Polymorpha sibirica, quæ promiscue eodem Typo palustri. Sa nostro
Fasc. VI. n.º 50 tantum varietate liujus describimus.



73a. *Daltonia heteromalla* Hook, and Tair. *Afusco. brit. p. St, tab. 33.*
Spognum arboren. *Linn. Heteri heteromalla* f. *Mf. Curyhrm hironwill* Brid. Meth. Mus.*
Ad alioium truen raro in arbor; si firuratur is occidentali Gallia. Vere.

733. Jung*рманrM nbtu-ifblm *Hook. brit. Jung, tab. 36.*
Ad trram turan cararunt |u %y|yi% montosis. Maio.

734. *Jungertnannia vetilricnss* Dicks, *rx* Hook, *brit** Jung. *tab.* 28.
Ad Iccram lap'rk'Sfiue in sylvis. Vere.






736. *Gyrophora imirina* Achar* *Lich* nniv. p. 53* (▷
Lich^h munitis Achar- Cmblicaru miiraa Be Cur.fl.*
la Vojesis tDferioriLus ad saxa nrenosa.

737. *Pantoclia Clueneriana* A char. *Licit. Univ.* p. 483.

In truncis reperitur nra> apud t« m] fictu«3 in Gsillia occiJentali umJe amic- camS. *Delise* misit.



738, *Parmelia ompbalodes* v. *parmiformis* Jchar. *Lidu unit'*, p. 469.
Ad saxa Vogesorum.



73V- *Parmelia aleimtes* Jchar. *Lich. unit*; p. 484.

Lichen • Wiles Achar. *Tmbricarum aleiirrii*.s *De C<m,l. Ft. / r. j* ^ ^

•I cnrttccm siburnin ^{rl} >ⁿ sanⁿ i*immiis ligrtcis iriibjbii^u^

Parmelia alunritcs »»•*ⁿ p**6^r v* "•" i'k) "" 3l, lanc speciem
sed aJ Panntl- wuJHguam Adw. certc spectat.

740. *Lecanora subftuca* et var. a. *argentata* Achar. *Sjn* Uch. p. 157.*

Ljtlitn *ubfq*cuĵ ĩ*w. Faioilaria lubfiuc* D« *Camd.*

Ad arboruni truuctĵj et ligna vetuila, Var. rt. in Fagi wrlice !*«.

74r. L*^{nr}n VUCMM Achar. Sfn. Lich. p. *&

Ad pvieln lapidesque.

7f* *Lecanora riirina* *Jc.har. Syn. Licfi, p. 176.*

Lithn cilnnui AckgT.

la iimtn ct ttu>



74 3- *Lee«nora caod*Uni a. et d. lychnea Achar. Syn. Lich. p. 192.*
Vtr. c lichen caridWanui ZJitn. 1., crtacolor ZJ/dtr. Pflcofljiim canciolarium fi
liabital in arhortim Inincij, Vsr. d- tvdtnpa, Borrem pyfinwa Bory
PJijscia culmjialis Lafryl, crescit lli soiii Vogesorumursis.

- »

744. *Lecidea petræa* Achar. *Syn. Lich. p. 15.*
Lichen petræus Wulf. *Patellaria petræa* De Cand.
Ad lapides et saxa.





7 (3. *Lwridea parmma Achar. Sjn. Lich, p, fj*
Lichen parasem ill Adur. UciJ^{uu} diwifohaia Fries. Patellari* parasema De Ctnd.
Ad arborum truncos.

746. Lecidet da***1*TM Achar. Syiu Lich, p. 18.
|D irbwim Curtice levi.

747* *Lecicta uliginosa* Achar, *Sjn. Lick. p. a5.*
Lidicu uliginosus Schrod. **Patclans** uliginosa Z'e Ctnd,
la locti uligtuosis *upra terram.

748. *tecidea Ehriurtiana* var. *poijiropa* Jckar. Sjn. Licfa p. 47.

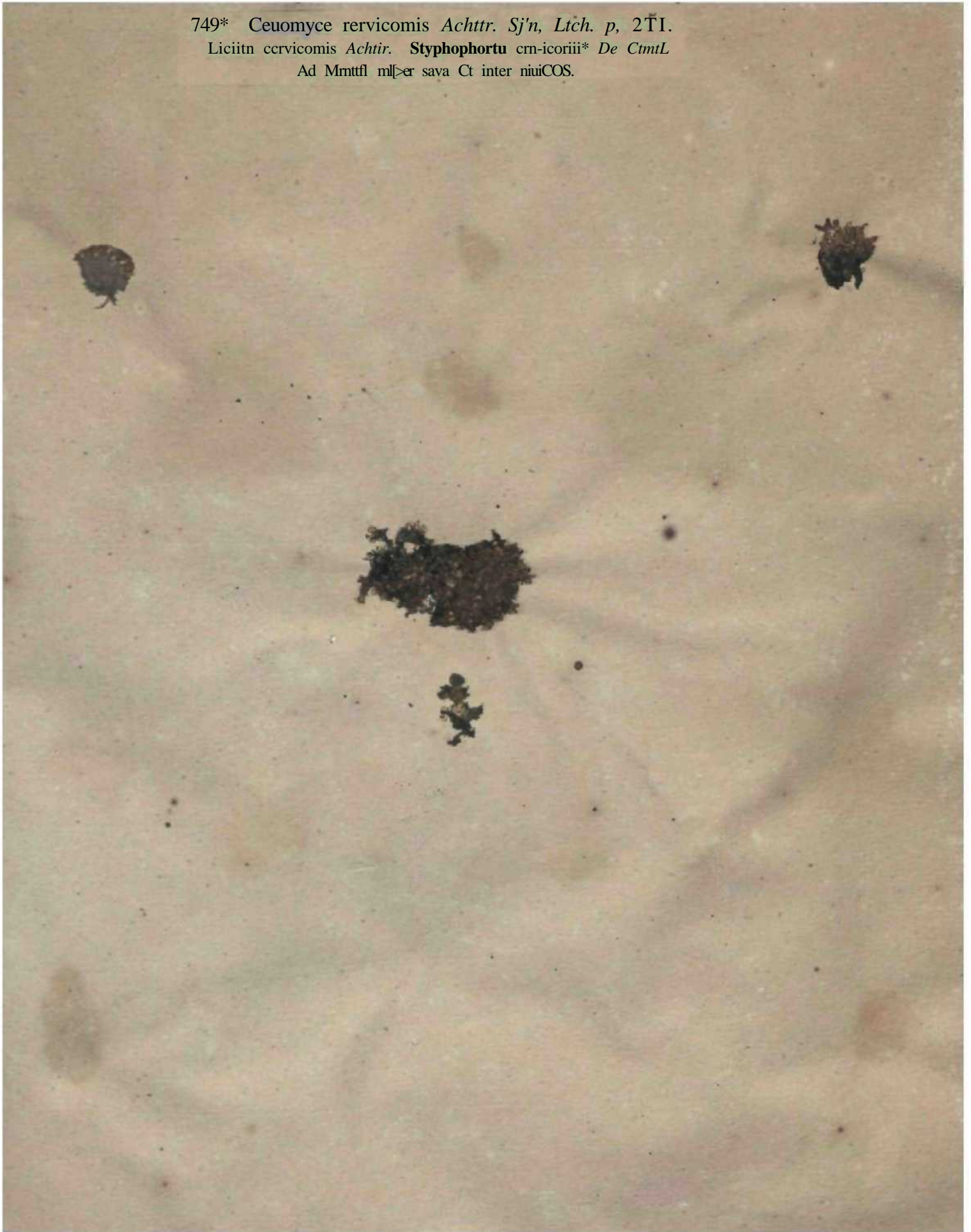
Lichen polytropus Ehrh.

In saxis Vogesorum.

749* *Ceuomyce cervicomis* Achtr. Sj'n, Lich. p, 2TI.

Liciitn cervicomis Achtr. **Styphophortu** crn-icorii* De CmtL

Ad Mmtfl ml[er sava Ct inter niuiCOS.





750. *Cenomyce bacillaris* Achar. *Syn. Lich. p. 266. ex Dufour in Litt.*
Lichen macilentus Ehrh. *Cenomyce polydactyla* v. *macilenta* Flörke in Litt.
In truncis putridis sylvarum et ad terram in ericetis.



5t. Cenomyce di^iim rt var, e. Achar Sjn. Licit, p. 367.*
lii tnucii patridi « w. *. w M i t m ^. Aar. Cenomyce ftpopbyMp ^«/otir, ud terram in jy lvis montosis,*



I 5

732. Cenonayre cocci fera A char Sjn. Lich. p. 269.

lichen cocci feruj I Ann.- Scv'p'ioy'>f¹¹¹¹¹¹¹¹¹¹ co«5i*rn» De Larui,

Supra terram in givra sel



753. *Cenomyce delicata* Achar, *SITTU Lick.* p. 274.
Lichen «U-Mcatui Ekrh* HtlopoJium iiclic;iiui« *Dc Cand.*
Li tjutrcu* imucii pulridii uujucc terra muscusa.

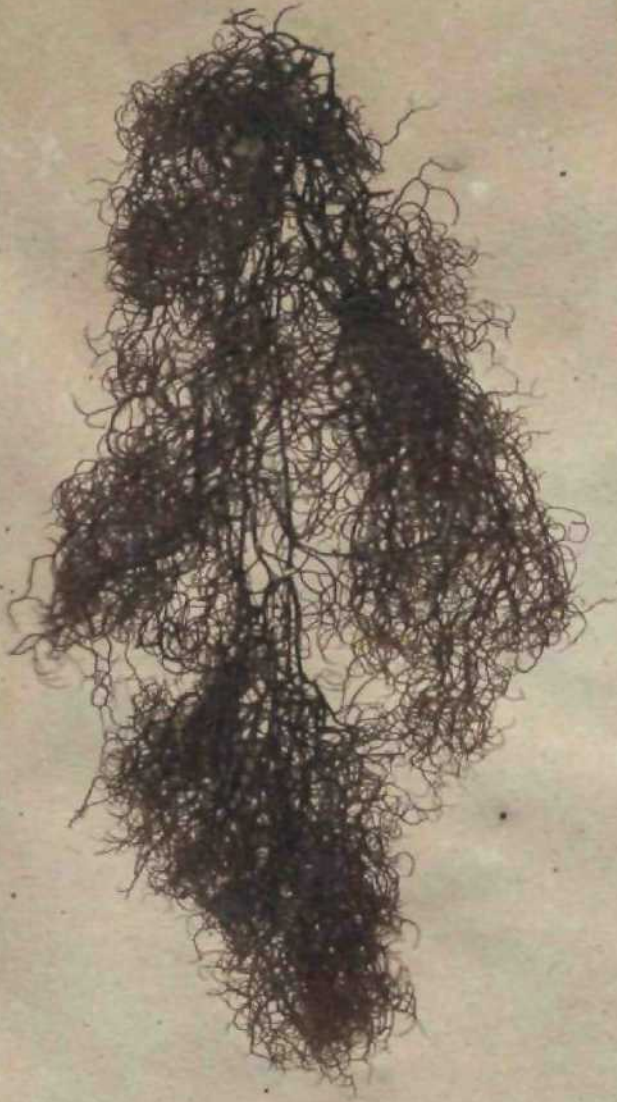
754- *Ceomyce radiformis* Flerke Deutschi Lichen, n.* 18.

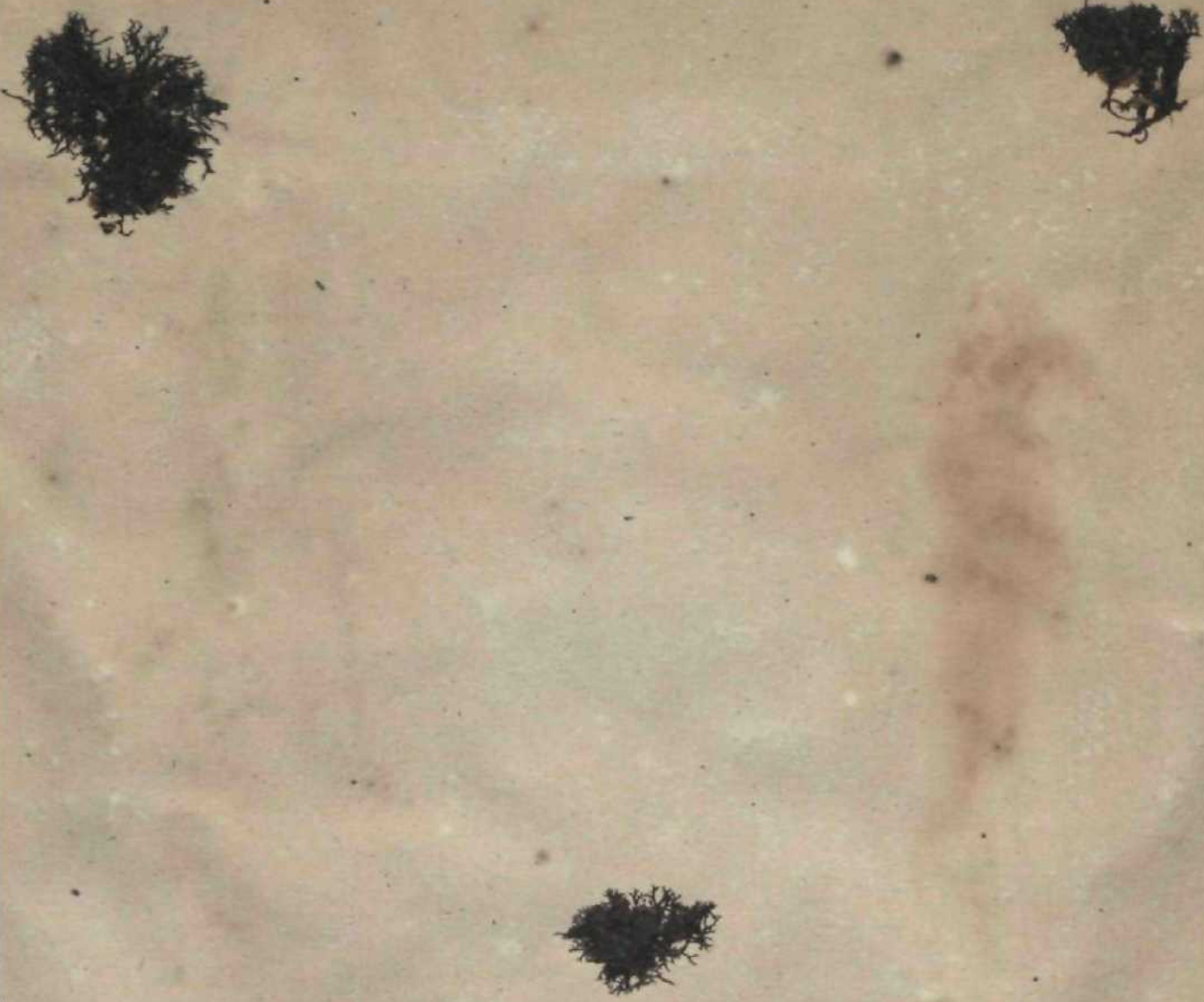
LicbdD pungEtis Achar. *Ceomyce laugiloitina* ft. *puiiRim* Achar.

Ad Terram Siibuloam in erleclis sylvis^uc ahicguil.



755. *Alectom crinalis* Jchar. *Lich, univ. p. 594.*
Ad tiburudi ramos io sylvia.





756. Comkalttla acnieata -v, muricdla *Flerke Deutsch. Liclten. n.º 118.*
la turninij Vogesorum sasii muscosis.

5. Pr renula leucocephala Achar. Syn* Lich.p. i a6. exciusb Sfrft. el Hoffm. synonymis.
7-7 F mula leucocephala Flær;* fVia^A. Lichtn. n." ifo. Lepranifw coUiculosa Dufour in Litt.
y SuPf* Q»«*III TMIt<em *'' sylvis prope Argenturium.
Sphæra... l_khr- caL*,faln... eam abietinam cel. Flærke l. c. &* i 33 retulit.

I

758- *Spiloma microctounm* Jckar. *SytU Lich. p. 3.*
~~Spiloma~~ *vetusto.*

n^o. 758. *Potius Inprovia*
fuliginosa Achar. *Lich. univ.*
recidens *antheina* *fyn. lich. p. 3.* 667

759. *Rhizomorpha subcorticatis* Per\$. *Sftu Fung*, p. 704.
Ilul>u;ii sub torlite vaiiarum inturuuii.



76*. *Xyloma Spittex* Kunzg mycolog* UP ft, I. p. 75.
Xyloma \rnifu(it>i* *Pert*, in *Litt*, *Lepio*,[roina -*Sinra*3? *FrUs Sjt. mycol.*
ID fipifze *L*\tu*rix ciulibui eujculJJ 1 livtoic a,c vere.



761. *Xytoma umbilicatura* Pers. in Litt*

Ad foJia a rid a Craia?ji Onyacanlhs'. Ilveme.

Perlticcio a>ibiiuio u, csatroin depmso (umbilioto), perforato
gelatinam sporiferam Ciiuinfiili' ul in Sphaeris.

Hysterium foliicola Trinia Syst. myc. 2. p. 598.

762.

ttysiermm degrneranj *Fries. Syst* mycohg, a. p. 585.*

In unniliu uiuoiLuis VacCinLi ultgiiioii. Vere.

•763. Sphffri" cnpitata P ^ J. Syn. Fung. p. 3. <* Bfyat. eur. tab. 10. /. 1-4.

Rnveilor ad Selrr*nlenna Cttviltnin in sy\vh abii^ntB, **autumno.**

111. Schmidt^"- " < !/*- .. P* 96. acuratissime
forma turn it bMim -Ejüli^ Cum CO arte esse iitulliiJi , qus^us: Diuua figur* » el 3. ifycol. «r.
supra dial* < iligenter representant.

764. Spbarü.cohyrens Pers. Syn. Fung. p. it.
Ad rutos arborum arefactos,

765. *Sphaeria vogesiaca* Pers, in Lilt,
in ligtio induralo Accris Pseudoplatani.

Sphaeria atropurpurea Coda et Amier

766. Spfcsin Ulmi *Sekltich. Crypt. ersicc. n?*^{r3.}
Sphaeria Xylmtilidi; Dt Cand Doliidca Ulmi Fries.*
la filial decidai Ulmi oaaipoab, bycaze.*



787.

Sphaeria oxystoma Pers. in Litt.

Ad corticem Pini piceae.

Affinis Sphaeriae Pini Alber. et Schw. et forsan una ac eadem species.

Sphaeria Kuntzei Kuntze Syst. myc. 8. p. 788.

768, *Sphaeria Peniculus Pers* in Lilt.*

In ramis Quercus eruortuis.

Sphaeria decorticans Fries Mycol. myc. 2p. 296

769. Sphaeria

"1"

Fries. Syst. mycolog. 2. p. 221.
corticis crassioris Tillae.

770. Sphæria fuliginosa Pers. Syn. Fung. p. 52.
Ad ramos Quercus.

Sphæria quercuum Schw. & Fr. in Hist. myc. p. 120

771. *Sphaeria cupularis* Pers. Syn. Fung. p. 53.
In cortice Carpini, Alni, Juglandisque.



772. SpWia PbastH Dc Cand, Fl. gall* Suppl. r. p. f3^
1B foliit dejectis Piui piece.

Cytispora Pinastri *Pinus sylvestris* - *Pinus sylvestris*



773. *Sphaeria pulveracea* Pers. *Syn. Fung.* p. 83.
Ad ligna Quercus exsiccata.

774- *Sphaeria foraminosa* Pen. in Liu.
Ad ramos dejectos Betulae.

Sphaeria lanciformis Tene (pl. m. 2. p. 262.)

75. *Onrgena cquina Pers. Sfn. Fung* p* 20 3,*
Lycoperdon equinum Willd.
anguibus rrtuiio rquurutu boumqnc , in iylvh humidis.



776. Nidularia Croribotom Fries. Srsr. mjn>!ng. a. 199.
C/ilfcu Cnvibolojn Peru SidnUri. I*vii BuU. Ve*t J^{vis} */*
ID vrpibu et cajnpft ad tigna putrida. Vere.

V

777, ltydauIQ aariswlpüini *PerS- Sjn. Fung** p. 53^.
In ilrffbiit* setuipultidjj Pini sjlvei(m, ab asme ail ~~auturnum.~~



I

778. *Telephora pergamenea* f^{ers}, *Mycol. europ.* p. 150.
Ad lignos pinos.

Telephora *oiss* *sub* *river* *171* 1648.



779 Thetepbora Stmbuei Pers* Mycol, europ. p, i5a-
TLeJrphofa calen r- g. Pers, Srn. Fung. j>, 5^i.
Ad UiiuctM coriosos Sambuci nigræ.

780. *Geoglossum glutinosum* b. *lubricum* Pers. *Mycol. europ.* p. 197.
In herbis sylvarum. Autumnus.



781. Leotia Clavus Pers. Mycol. europ. p. 200. tab. XI. f. 9.
Ad ligna pinæ in Vogeorum rivulis. Estate.

Vibrissia tumescens Kniea Sp. myc. 2. p. 21.

782. *Helotium aureum* Pers. *Syn. Fung.* p. 678.
Periza (*Helotium*) *aurea* Fries. *Syst. mycol.* 2. p. 156.
Ad ligna decorticata : corticemque putridam in sylvis abiegnis, hyeme ac vere.

783. *Periza aurelia* Pers. *Mycol. europ.* P. 270.
In pericarpis foliisque deciduis Fagi et Quercus. Vere.

Periza wuechii Grev. *Stat. Crypt. Ital.* Tab. 159

784. *Periza citrina* *Pers.* *Syn. Fung. P.* 663.
Octospora citrina *Helw.*
Ad truncos ramisque putridos. Autumnus.

785. *Peziza herbarum* Pers. Syn. Fung. p. 664.
In caulis plantarum majorum; praesertim Urticae dioicae. Vera.



786. *Periza nervisequa*

Periza nervisequa Fri

In foliis emortuis

Periza nervisequa

ol. europ. p. 50

mycol. v. p. 53.

lancoletur. April.

U. fung. n. p. 147

Phi



787. *Teika carpinea* Pars. Sjn. Fung. p. 673.

In for Lice pmortan Carpi 11 u Autumtio,

Ditiotia perzdova Kniez Syst. bot. reg. p. 960

^68. Peziza umhtJi';iji /'rr.f. **MjCoL ruop. p. 3a3.**

A reliquis Pcziiis ot jam monuit ccJ. Pertoou J. e, rctedit ct ad g.'im» aliuj pertinet.

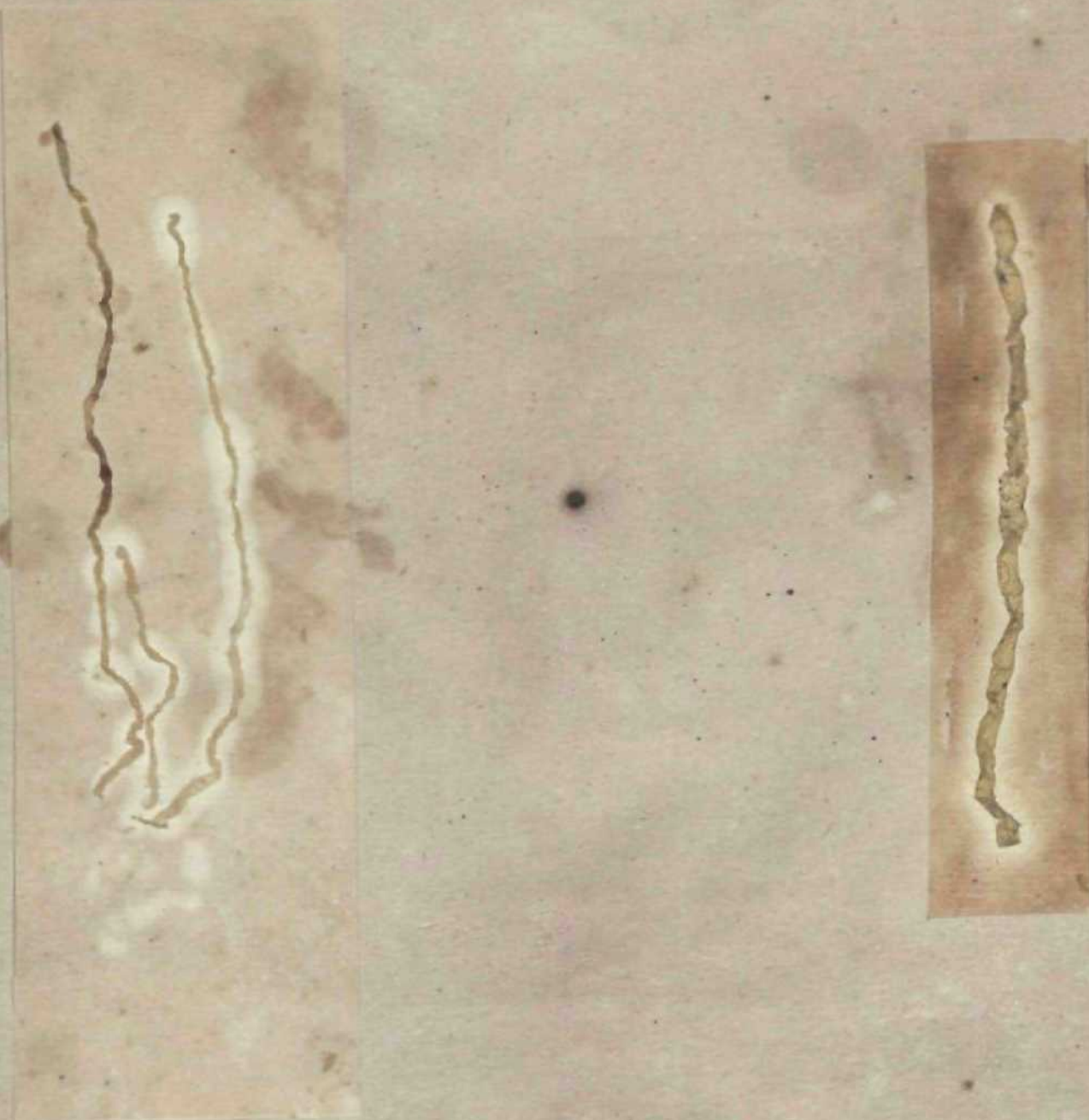
H₂ v *remba umbilicata* ^A>V«iy, iSL Ju^^L. 9•pt5V.

180. Peziza AttCOparfaE Pers* My col. europ* p. 327.
Tynipatiia consiwisa Fries. Syit. mrcol. •>, p_m, ^
In ramis Sorbi Amuparia? emortuis acs.lat* piuviosa viget.

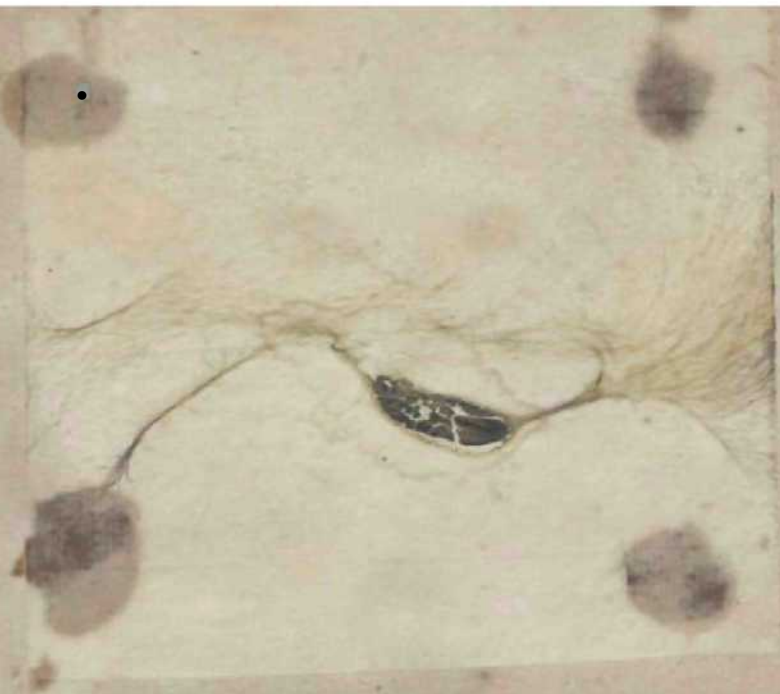


799. *Racodium cellare* Pers. *Syn. Fung.* p. 701.
 Byssus mollissima Ehrh.

In cellis vinariis ad ligna doliaque, toto anno.



-tji. t IVJ ioipjlinalis *Linn*,
In iquil stagnantibus. *Æstate*.



792. *Oscillaria nigrescens* Bory de S.¹-Vincent in Litt.

Oscillaiorm nigrt Vattckt T <*o*- uiP/r*, ejt d gadh.

In aquis puris circn *Limrvilhim* ohfervavit smic. cans?. *Ctdhinlot.*



-t>3. Led* capacua J?o*r de S.-f'inent in iitt.
Coafcm utbalDrt Gfattfottp, ^J.- Mertetis in Lift.
|:i foiK* si «™ tTI«rum, a[rili , maior|u--.

Affu

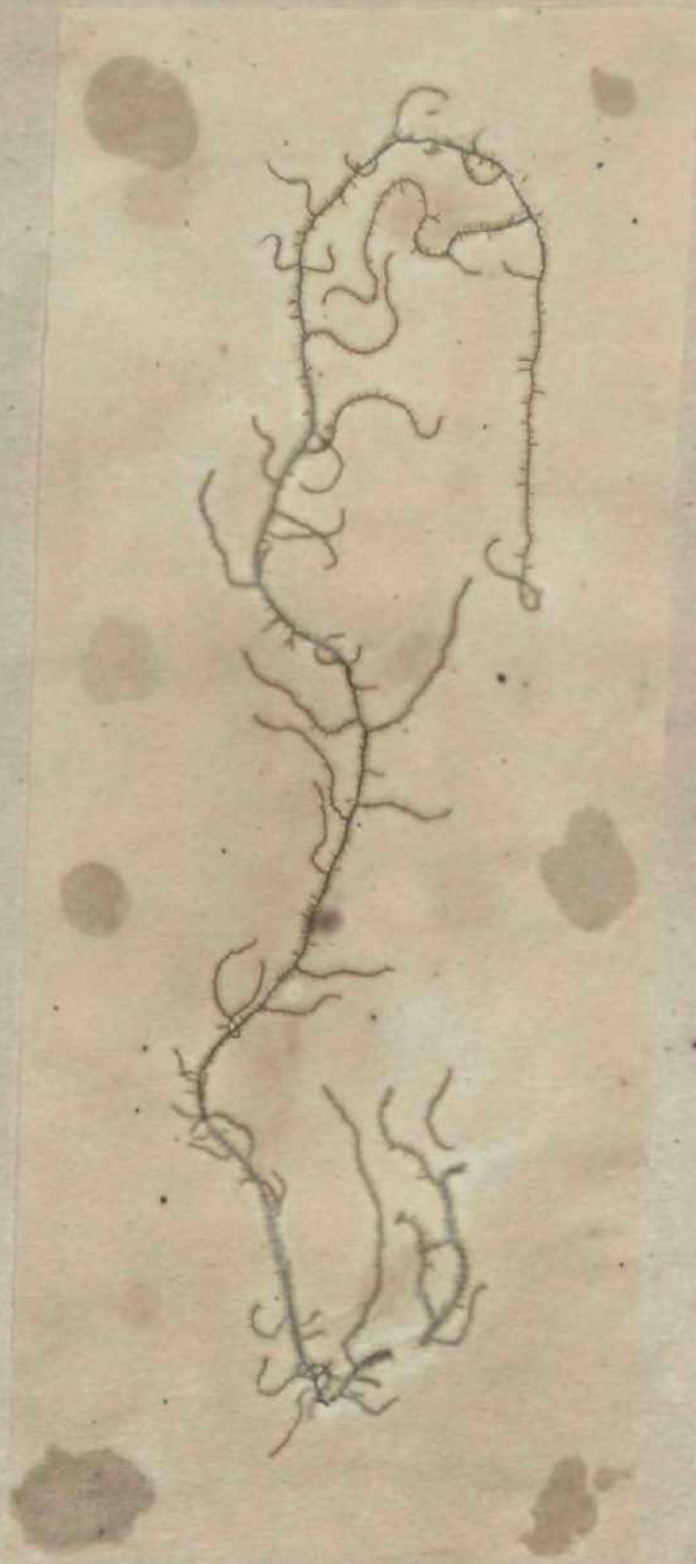


794. *Zygnema dubium* Bory de St.-Vincent in Litt.

In locis udis ad oras sylvarum. Vere.

Species inquirenda ex *Agartha* Lys. Alg. p. 82, *affinis* *comb. tuzeiformis*





795. *Tfcorea ranxwiss/na Bory (U SfrPtrxent dnn. da Sfas, 12. p. 128. t. zS.f, t.*

Cortfervn Imjijia Thury Ealraili>8[iermutn liiipidmn De Cand.

Ail palos ligneoi tn Rlt<ut aquia circn Jrgen:ornnm, estate et autumnno,

Perelegantem hanc algam apud nos detexit oculatiss. Kneiff.



736. GaUUrdoietti atfan* Jiorf th Sf-Plncent in Litt.'

1-iinlu tiaUat Lrmgh, Trcmella natans i&dw.

Im tauü md herbtitt hpiüts.[u>: JEnme*

A reliqui* IJp^{fti} Lrngi. itr*cion ititetna diilerl ac propriA genus coiuiitit.



797- Ctuetopbon efegins *Jgardk Syn. A1%. p, ia8.*
Rivular u t!fifiii* *Ruth. Eatrwchospirnnjm inlricalum Punch,*
Ad lipidfl c(hi rtas in rivulis.



798. *Jvosloc verrucosum* *Vhueh** *Hist, ties Con/, p. aa5. f, 16. f% 3,*
TreracUa vertucoja *Lhin.*
In rivulis ad Jajjidts circa *Ramherwillam. Æstate.*

*Huc noster inter species inquirendas locavit col. Agardh in *hist. alg.* p. 23.*

799 >"<toc pusitfum Bory de S.'-fincent in tin.

Ad Lpidn nVuloruin luotiiis Hokneck. Estate.

notus & Mexican vauch. ex agardh. syn. al. p. 80



800. *Palmella hyalina* Lyngb. *Hjrdmphi*. p. 304. tab, 6g. C.

In fundo rivulorum diinde arjuaiuni fu[?]Gic mnatnas, apiiii.

Palmellis ~~hyalina~~ *hyalina* ii'movcudum IAJmt-IUm M vosurtini (Rivulariam ? rntirum collect.
 nostrae Fa*c, V, n." 500,) uam ad [noprium gmus (Quzellara 5ry i W./) pertiuet,

BOOK CARD
Indian Botanic Garden Library
BOTANICAL SURVEY OF INDIA

Coif No \$J.\-£..... Ace. No. .8:!.9;J%k....

Author..... Mougeot, J. B. & others

Title \$*tfK> (J/t#IW+n<tf V<S<#AC Klwar

-nae quas in Rhini Superiotus...

Nanw of Bornwer/Code Mo.	Date of Issue	Daie of Return

INDIAN BOTANIC GARDEN LIBRARY
BOTANICAL SURVEY OF INDIA

